

GPR PRIORITIZATION FRAMEWORK for Sustainable Purchasing v1.0

DISCUSSION DRAFT

1 CALCULATE

PURCHASING category × SPENDING per category = IMPACT per category

Impact per category is a product of total spending multiplied by per dollar impact intensity.

2 PRIORITIZE

IMPACTS for priority categories | IMPACTS across all categories

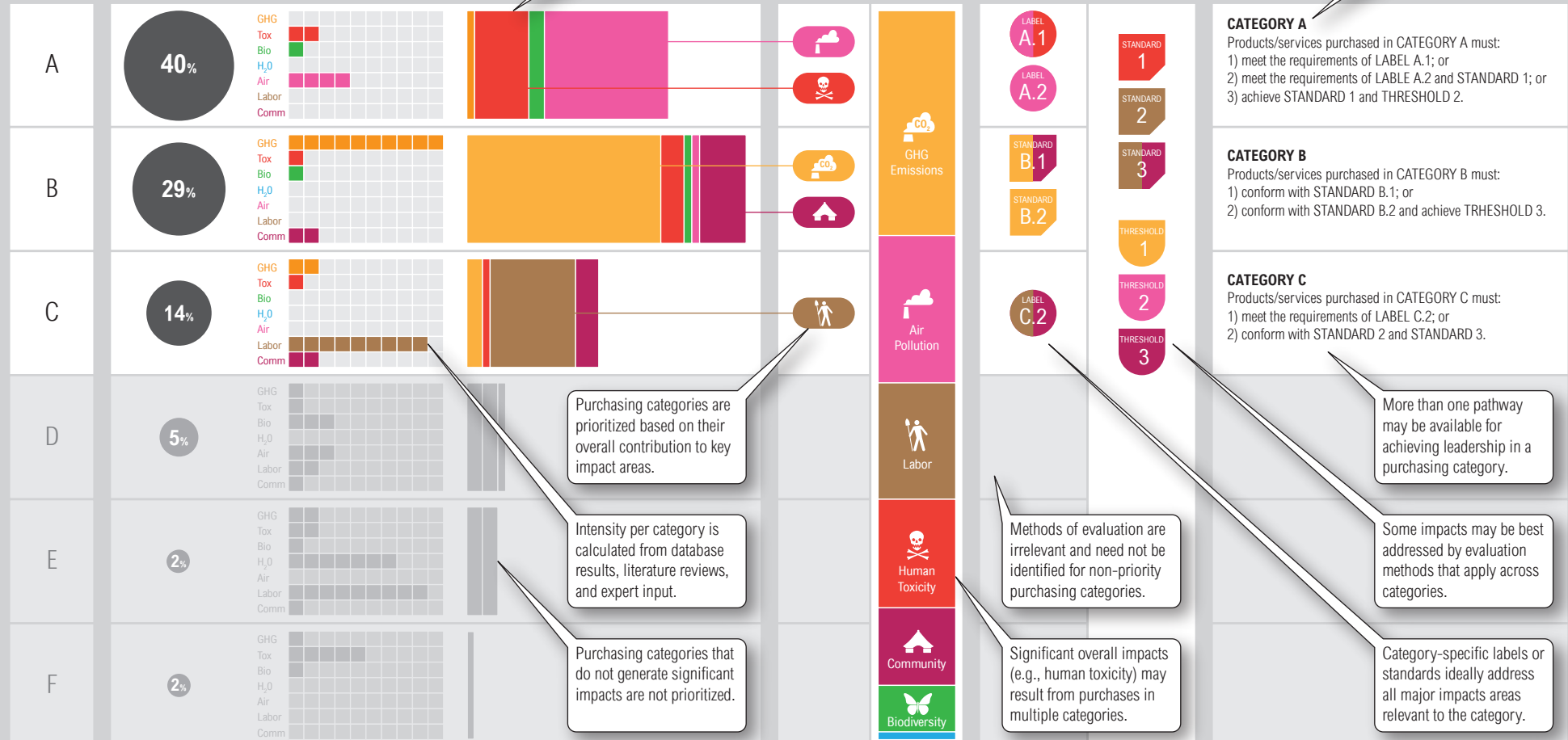
3 CORRELATE

METHODS of evaluation per category | METHODS of evaluation across categories

4 IMPLEMENT

LEADERSHIP POLICIES for purchasing

Exact RFP language is provided to enable ready integration of leadership criteria into policies.



Purchasing categories are prioritized based on their overall contribution to key impact areas.

Intensity per category is calculated from database results, literature reviews, and expert input.

Purchasing categories that do not generate significant impacts are not prioritized.

Methods of evaluation are irrelevant and need not be identified for non-priority purchasing categories.

Significant overall impacts (e.g., human toxicity) may result from purchases in multiple categories.